

A hand holding a yellow pencil is pointing to a document with text like '15. OA B OC OD'. The text is repeated in a grid-like pattern across the page. The background is a light beige color.

# Parent Visitation Day

November 3, 2011

NWEA Update

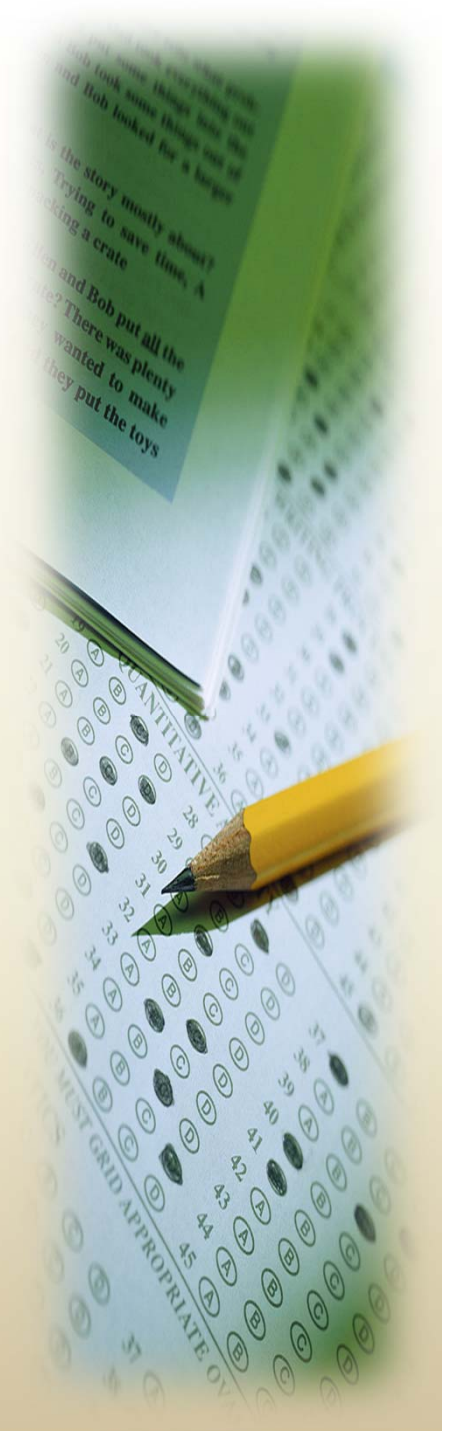
# NWEA

- Northwest Evaluation Association
- Given three times per year (October, January, May)
- Students complete the tests on the computer. Primary students have an audio component to the test.
- Results are used to make informed decisions about the instructional program for each student.



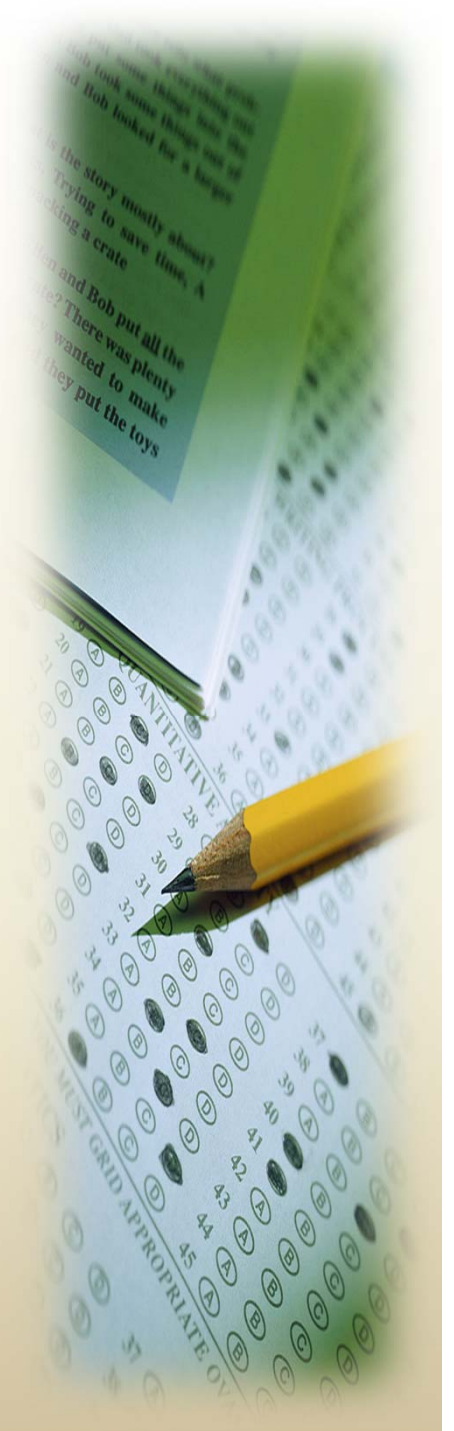
# Primary Students (K-2)

- 4 sections of testing/ 30 minutes per test
  1. **Math**- Measurement, Geometry, Statistics/Probability, Algebra
  2. **Math**- Problem Solving, Number Sense, Computation
  3. **Reading**- Phonemic Awareness, Phonics, Concepts of Print
  4. **Reading**- Vocabulary, Comprehension, Writing



# Intermediate Students (3-5)

- 3 sections of testing/ 60 minutes per test (average student)
  1. **Language**: Composing/Writing Process, Composition Structure, Basic Grammar and Usage, Punctuation, Capitalization
  2. **Reading**: Word Recognition, Comprehension (Inferential/Interpretive, Literal, Evaluation), Literary Response and Analysis
  3. **Math**: Number Sense, Estimation and Computation, Algebra, Geometry, Measurement, Statistics and Probability, Problem Solving, Reasoning, and Proofs



# Resources

- <http://www.nwea.org/>
- <http://www.nwea.org/support/article/930/parent-toolkit>
- <http://www.nwea.org/support/article/1215/training-online-map-primary-grades-warm>
- <http://www.nwea.org/support/article/970/map-student-powerpoint-presentation>

